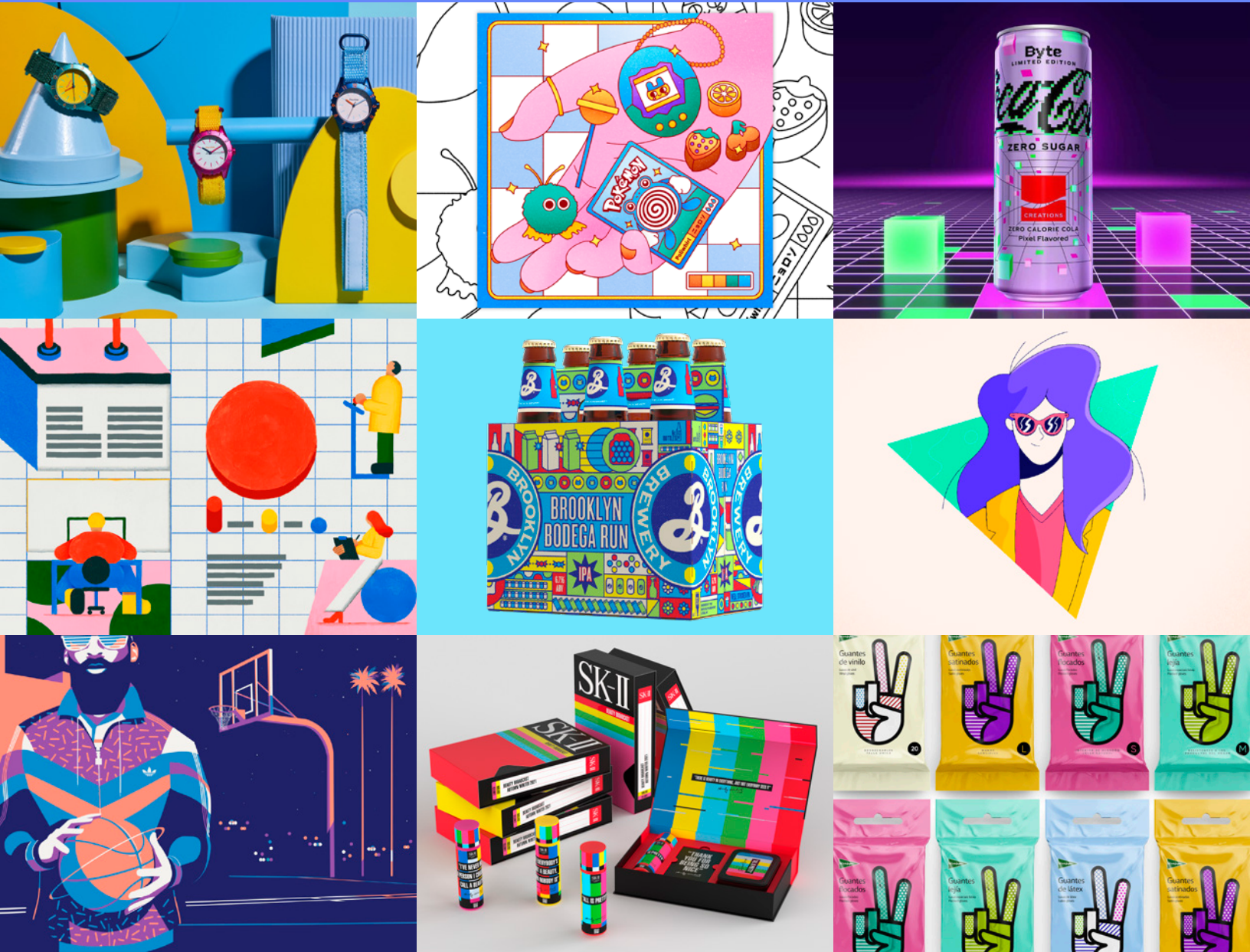


# 90's MODERN



Drawing from a wealth of iconic imagery of the 1990s – visuals of early computing, video tape culture, and the remnants of Memphis design – 90's Modern design relies on pop color. Full of chunky pastels playing off primary colors, the illustrations bring back a time when graphics were flatter but often full of detail, and basic geometric shapes and grids anchored the eye. The video glitch, the nostalgic replacement for film grain, evokes memories of VHS tapes, when home video was in its infancy. Far from the grunge style of the later 90's, this style's clean lines and negative space still feels mod.