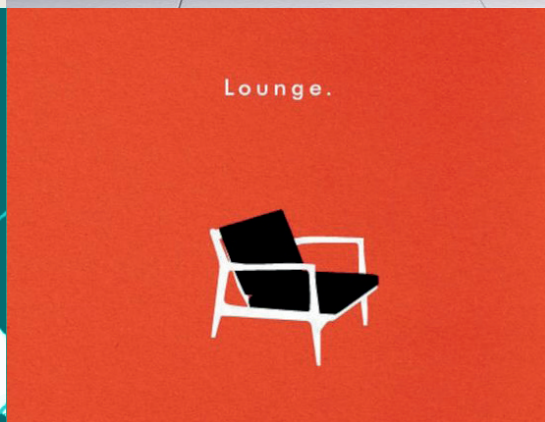
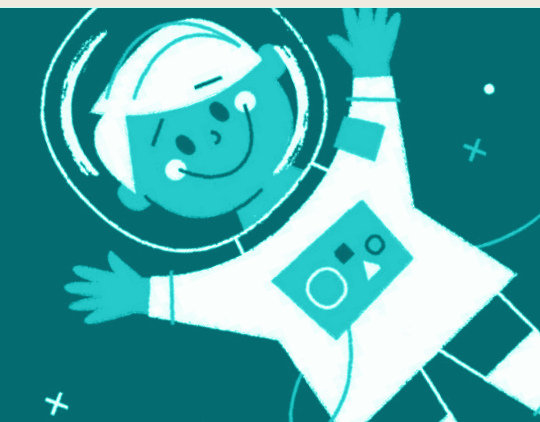
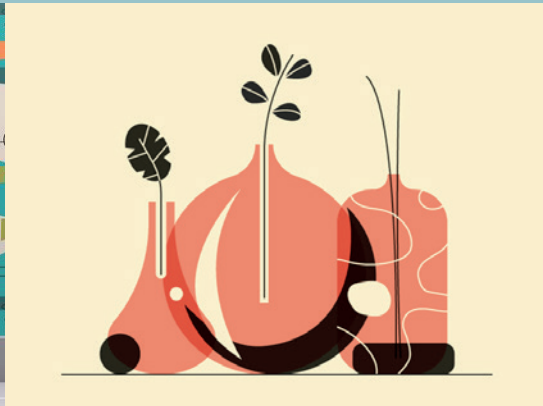


MODERN MID-CENTURY MODERN



Mid-Century Modern remains a popular aesthetic. It has a kind of boldness that is balanced by calm frequently offset by negative space. Found throughout home wears and illustration, its use in graphic design is pointed: hand-created scripts and typography are filled with personality that pop and call attention to itself, contrasting from the backdrop of warm, natural colors and abstract imagery. Illustrations have texture-rich lines and gritty edges, signaling the original hand and physical material. When paired with the crisp, clean geometric lines, it brings interest to the overall composition.